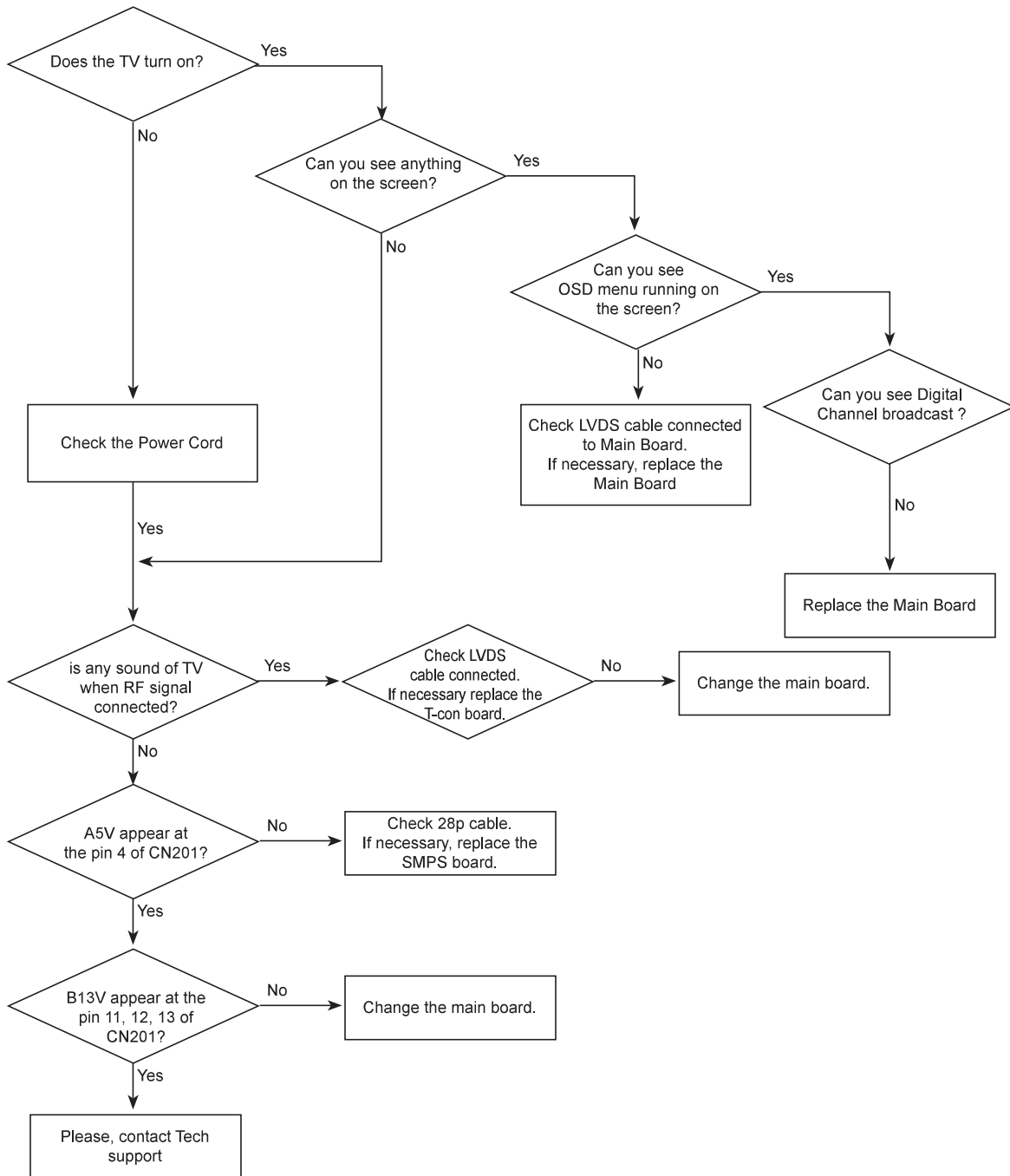
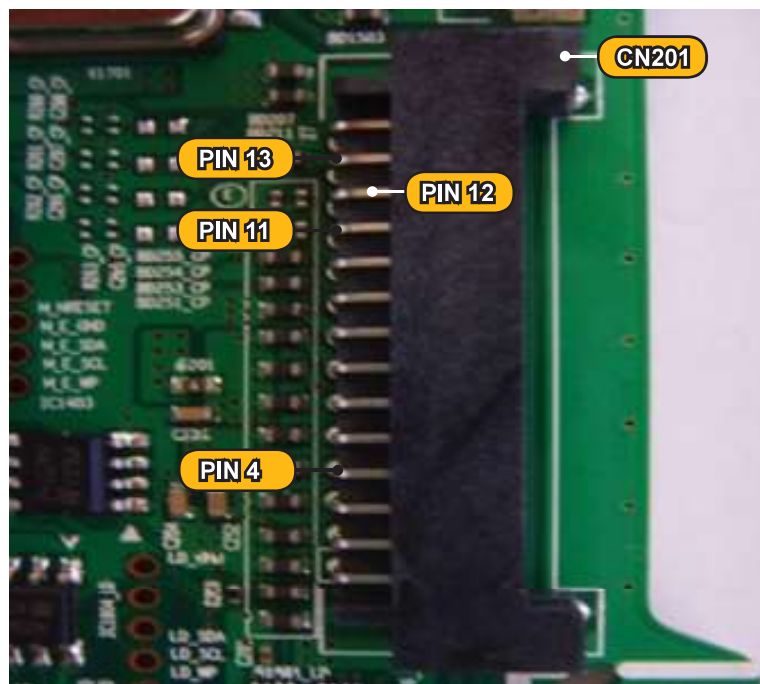
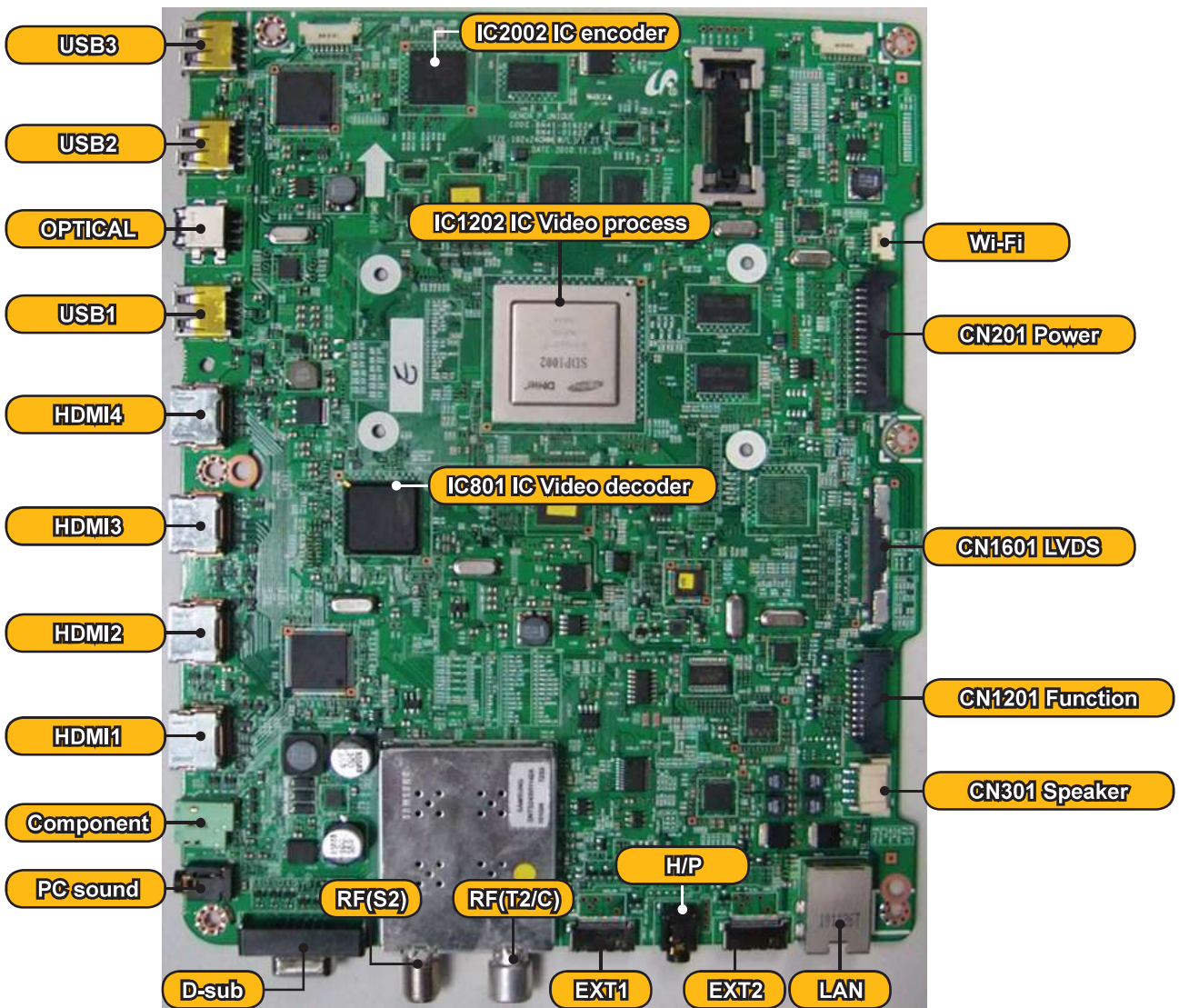


■ Simple flow chart of malfunction





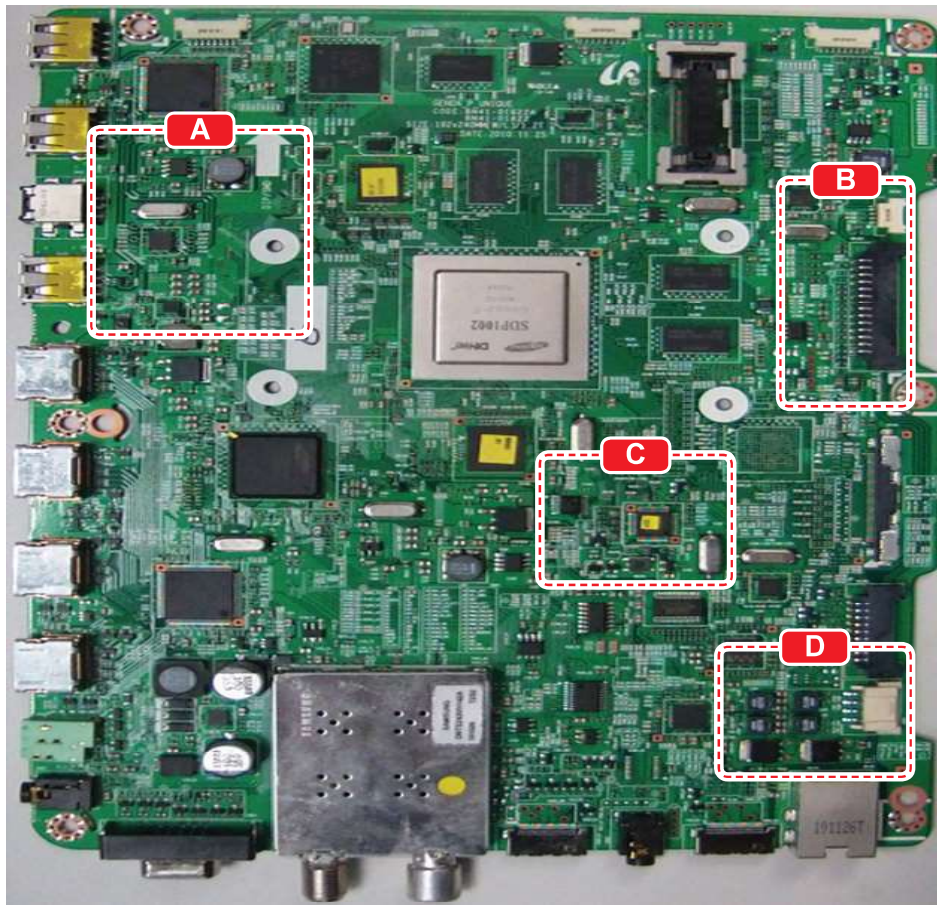
4-1-2. How to check fault symptom

■ No Power Genoa-P

Refer to the next page to check the location such a CN201 or IC201 SVC Manual mentioned.

Symptom	<ul style="list-style-type: none"> - The PD board relay does not work when connecting the power cord. - The units appears to be dead.
Major checkpoints	<p>The PD relay does not work when connecting the power cord if the cables are improperly connected or the Main Board or PD is not functioning. In this case, check the following: Check the internal cable connection status inside the unit. Check the fuses of each part. Check the output voltage of PD. Replace the Main Board.</p>
Caution	Make sure to disconnect the power before working on the PD board.
Diagnostics	<div style="border: 1px solid black; padding: 5px; margin-bottom: 5px;"> When power on, check the sound of relay on? </div> <div style="display: flex; justify-content: space-between; margin-left: 100px;"> Yes No </div> <div style="margin-left: 100px;"> <div style="border: 1px solid black; padding: 5px; width: 60%; margin-bottom: 5px;">Check a connection power cable.</div> </div>
	<div style="border: 1px solid black; padding: 5px; margin-bottom: 5px;"> Check the backlight on, when 28p cable unconnected ? </div> <div style="display: flex; justify-content: space-between; margin-left: 100px;"> Yes No </div> <div style="margin-left: 100px;"> <div style="border: 1px solid black; padding: 5px; width: 60%; margin-bottom: 5px;"> Change 28p cable. Change Main Power Assy. </div> </div>
	<div style="border: 1px solid black; padding: 5px; margin-bottom: 5px;"> Does proper Stand-By DC A5V appear at the PIN 4 of CN201? </div> <div style="display: flex; justify-content: space-between; margin-left: 100px;"> Yes No </div> <div style="margin-left: 100px;"> <div style="border: 1px solid black; padding: 5px; width: 60%; margin-bottom: 5px;"> Does proper Stand-By DC A5V appear at the PIN 4 of CN201? </div> </div>
	<div style="border: 1px solid black; padding: 5px; margin-bottom: 5px;"> Check 'Main power input' ? - PIN7 : B18VS - PIN11 : B13V - PIN1 : B5V </div> <div style="display: flex; justify-content: space-between; margin-left: 100px;"> Yes No </div> <div style="margin-left: 100px;"> <div style="border: 1px solid black; padding: 5px; width: 60%; margin-bottom: 5px;"> Check 'Main power input' ? - PIN7 : B18VS - PIN11 : B13V - PIN1 : B5V </div> </div>
	<div style="border: 1px solid black; padding: 5px; margin-bottom: 5px;"> Does proper DC A3.3V appear at the pin3 of IC203? </div> <div style="display: flex; justify-content: space-between; margin-left: 100px;"> Yes No </div> <div style="margin-left: 100px;"> <div style="border: 1px solid black; padding: 5px; width: 60%; margin-bottom: 5px;"> Change the IC203 or the Main Assy. </div> </div>
	<div style="border: 1px solid black; padding: 5px; margin-bottom: 5px;"> Does proper DC B3.3V appear at the pin8 of IC202, B9V appear at 3pin of IC201? </div> <div style="display: flex; justify-content: space-between; margin-left: 100px;"> Yes No </div> <div style="margin-left: 100px;"> <div style="border: 1px solid black; padding: 5px; width: 60%; margin-bottom: 5px;"> Change the IC202, IC201 or the Main Assy. </div> </div>
	<div style="border: 1px solid black; padding: 5px; margin-bottom: 5px;"> Does proper Genoa-P core 3.3V,1.1V appear at C1009,C1035? </div> <div style="display: flex; justify-content: space-between; margin-left: 100px;"> Yes No </div> <div style="margin-left: 100px;"> <div style="border: 1px solid black; padding: 5px; width: 60%; margin-bottom: 5px;"> Change the IC202, IC207 or the Main Assy. </div> </div>
	<div style="border: 1px solid black; padding: 5px; margin-bottom: 5px;"> Check power supplied to panel at C228" and where is C228? </div> <div style="display: flex; justify-content: space-between; margin-left: 100px;"> Yes No </div> <div style="margin-left: 100px;"> <div style="border: 1px solid black; padding: 5px; width: 60%; margin-bottom: 5px;"> Check a other function(No picture part). Replace a LCD Panel </div> </div>
Caution	Make sure to disconnect the power before working on the IP board.

Location (Main)



Detail

