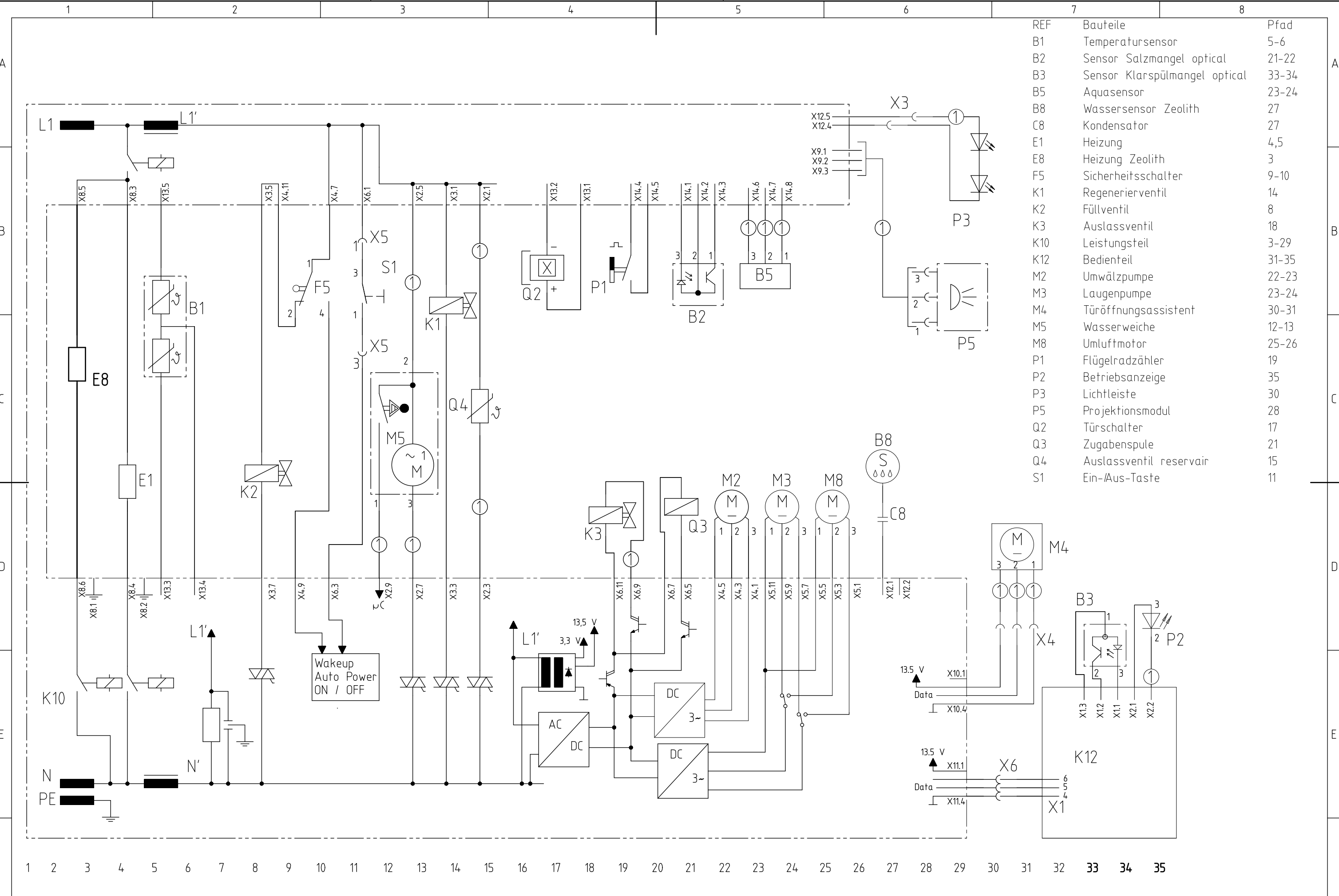


Intended changes opposing release specimen or specification offer must be advised in time and may only be introduced following written clearance. Deviating designs will be refused.

 The reproduction, transmission or use of this document or its contents is not permitted without express written authority. Offenders will be liable for damages. All rights including rights created by patent grant or registration of a utility model or design are reserved. Copyright reserved.



REF	Bauteile	Pfad
B1	Temperatursensor	5-6
B2	Sensor Salzangel optical	21-22
B3	Sensor Klarspülmangel optical	33-34
B5	Aquasensor	23-24
B8	Wassersensor Zeolith	27
C8	Kondensator	27
E1	Heizung	4,5
E8	Heizung Zeolith	3
F5	Sicherheitsschalter	9-10
K1	Regenerierventil	14
K2	Füllventil	8
K3	Auslassventil	18
K10	Leistungsteil	3-29
K12	Bedienteil	31-35
M2	Umwälzpumpe	22-23
M3	Laugenpumpe	23-24
M4	Türöffnungsassistent	30-31
M5	Wasserweiche	12-13
M8	Umluftmotor	25-26
P1	Flügelradzähler	19
P2	Betriebsanzeige	35
P3	Lichtleiste	30
P5	Projektionsmodul	28
Q2	Türschalter	17
Q3	Zugabenspule	21
Q4	Auslassventil reservair	15
S1	Ein-/Aus-Taste	11

① je nach Ausstattung vorhanden

Designation Circuit Diagram 640 / 440 LM3 Basis-H	LCS	Document No.	Rev	Sheet-No.
	DE	5600 0001196155	B	1 of 1
Material No. 900809445				

Intended changes opposing release specimen or specification offer must be advised in time and may only be introduced following written clearance. Deviating designs will be refused.

 The reproduction, transmission or use of this document or its contents is not permitted without express written authority. Offenders will be liable for damages. All rights including rights created by patent grant or registration of a utility model or design are reserved. Copyright reserved.

REF	Bauteile	110 - 127 V~	200 - 240 V~	Pfad
B1	Temperatursensor 25°C PIN 1-2 / 2-3	9 kΩ - 11 kΩ		5-6
E1	Heizung 25°C PIN 1-2	7,9 Ω - 11,3 Ω	17 Ω - 21 Ω	4-5
E8	Heizung Zeolith 25°C	---	32,6 Ω - 37,1 Ω	3
K1	Regenerierventil	0,49 kΩ - 0,73 kΩ	1,5 kΩ - 2,5 kΩ	14
K2	Füllventil	0,89 kΩ - 1,30 kΩ	3,2 kΩ - 5,2 kΩ	8
K3	Auslassventil	1,5 kΩ - 1,67 kΩ	7,2 kΩ - 7,8 kΩ	18
M2	Umwälzpumpe 25°C Pin 1-2 / 2-3 / 3-1	13,9 Ω - 15,5 Ω	39 Ω - 56 Ω	22-23
M3	Laugenpumpe 25°C Pin 1-2 / 2-3 / 3-1	117 Ω - 150 Ω		23-24
M5	Wasserweiche 25°C Pin 2-3	0,75 kΩ - 1,7 kΩ	3,8 kΩ - 6,8 kΩ	12-13
M8	Umluftmotor 25°C Pin 1-2 / 2-3 / 3-1	---	120 Ω - 124 Ω	25-26
Q3	Zugabenspule	1,86 kΩ - 3,70 kΩ	7,34 kΩ - 11,8 kΩ	21
Q4	Auslassventil reservair 25°C	0,80 kΩ - 1,2 kΩ		15