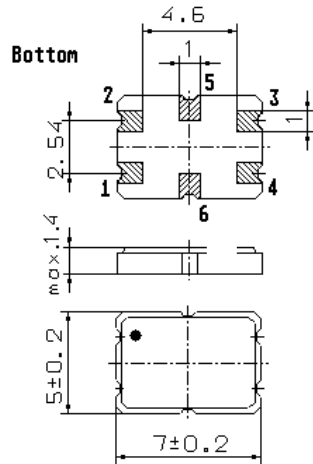


Specification for monolithic crystal filter:

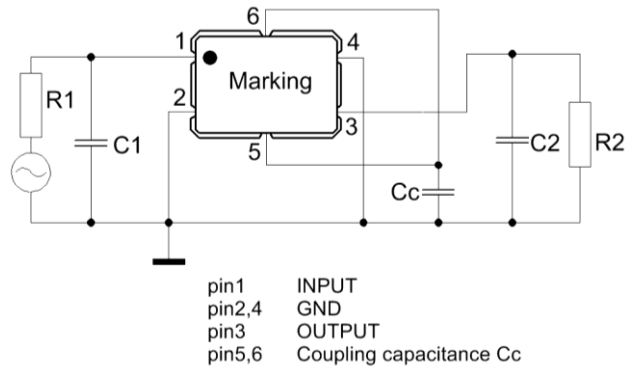
**MQF 45.0-0750/21**

1. General

1.1. Package:



**GS 2**



- |                                   |                  |
|-----------------------------------|------------------|
| 1.2. Type name:                   | MQF 45.0-0750/21 |
| 1.3. Number of poles:             | 4                |
| 1.4. Operating temperature range: | -25°C to +85°C   |
| 1.5. Storage temperature range:   | -55°C to +85°C   |

2. Electric values

- |   |   |
|---|---|
| 2.1. Nominal centre frequency fo:   | 45.0 MHz                                    |
| 2.2. Pass band  |   |
| 2.2.1. Bandwidth between 3 dB - frequencies:                                | ≥ fo ± 3.75 kHz                             |
| 2.2.2. Ripple:  | ≤ 1.0 dB at fo ± 2.5 kHz                    |
| 2.2.3. Insertion loss:<br>( measured on smallest attenuation in pass band ) | ≤ 4.0 dB                                    |
| 2.3. Stop band  |   |
| 2.3.1. fo ± 12.5 kHz  | ≥ 30 dB                                     |
| 2.3.2. fo -200 kHz.....-1000 kHz  | ≥ 80 dB                                     |
| 2.3.3. fo +200 kHz.....+600 kHz   | ≥ 70 dB                                     |
| 2.3.4. fo +600 kHz.....+1000 kHz  | ≥ 20 dB                                     |
| 2.3.5. Spurious responses:  | ≥ 30 dB in the range fo+12.5 < f < fo+1 MHz |
| 2.4. Terminating impedance R//C ( input and output ):                       | 550 Ω // 2.5 pF                             |
| 2.4.1. Coupling capacitance ( Cc ):   | 13 pF                                       |
| 3. Marking:   | M45B4<br>date code                          |
| 4. Environment conditions:  | Corresponding to Vectron standard CF001     |
| 5. Filters are Pb-free and 2002 /95 / EC RoHS compliant                     |   |

Edited by: \_\_\_\_\_ date: \_\_\_\_\_ name: \_\_\_\_\_